

Camera Hole

Athletica IOM manual

Athletica Sport Systems Camera Hole installation instructions

This manual details the recommended method for installation and use of the Camera Hole.

Warranty

This Athletica Sport Systems product is warranted to be free of defects in materials and workmanship for a period of 1 year from the date of purchase. Please contact Athletica Sport Systems with any questions about the performance of this product.

Contact Us

Canada and International

554 Parkside Drive. Waterloo ON Canada N2L 5Z4
519-747-1856

USA

720 Innovation Drive. Shakopee MN USA 55379
763-249-7465

Replacement parts available.

Tools & Parts Required

The following is a list of items required in order to perform the installation.

Item	Supplied
Handheld router (1/2" collar)	No
1/2" Straight trim bit	No
3/8" Roundover bit	Yes
Camera hole template	Yes
Camera hole cover	Yes
2 Heavy-duty clamps	No
Drill (1/2" collar)	No
3/4" Drill bit	No
Tape measure	No
2 Saw horses	No
De-burring tool	No
Scraper	No



IMPORTANT!

Make sure the camera holes are installed by a qualified carpenter with proper tool training.

Step 1: Camera hole location

Determine location of the required camera hole in accordance with National Hockey League guidelines. Mark outline on the spectator side of the acrylic with non-permanent marker.

Bottom edge of the hole should be 4" - 6" above caprail.

Remember, seamless U-channel is 3" deep so from bottom edge of acrylic 7-9" on seamless Acrylic.

Be careful, as most door locations do not have the U-channel.



Step 2: Template

Once hole location is established, place the template on the backside of the acrylic. This will be the spectator's side. The ice side of the acrylic will be facing up. Template on the bottom. Clamp the template to the acrylic using two clamps. Make sure that the clamps will not interfere with the base of the router.

Note: Protect the surface of the acrylic when clamping the template so the surface of the acrylic does not get scratched.



Step 3: Access hole for router bit

Drill a 3/4" or larger hole in the center of the camera hole. The hole should be large enough for the straight trim bit to fit through.



Step 4: Router with straight trim bit

Check the tightness of the clamps to make sure that the template does not move when you are routing.

Make sure bearings are tight on the bit.



Bearings must line up with template on the bottom of the acrylic.



Always run the router clockwise when using the template to cut. Flush rout the camera hole to the camera hole template.



With the hole successfully cut and removed, leave the template in place as this will be the guide for the roundover bit.

The edge of the template may have some material stuck to it after running the flush trim bit. Use a scraper to clean the edge of the template so that it is clean for step 5.

Step 5: Using roundover bit

Unplug router, remove straight trim bit in router and replace with 3/8" roundover bit provided.



Set the bit so the straight edge is 1/16" – 3/32" above the base of the router. Make sure bearing are tight on roundover bit.



Router to the camera hole template using the roundover bit. The bearing should run entirely on the camera hole template.

Step 6: Checking the depth of the cut

Do not remove the clamps. Leaving the template in place, set the camera hole cover into the camera hole to see if it sits flush with ice side of acrylic.

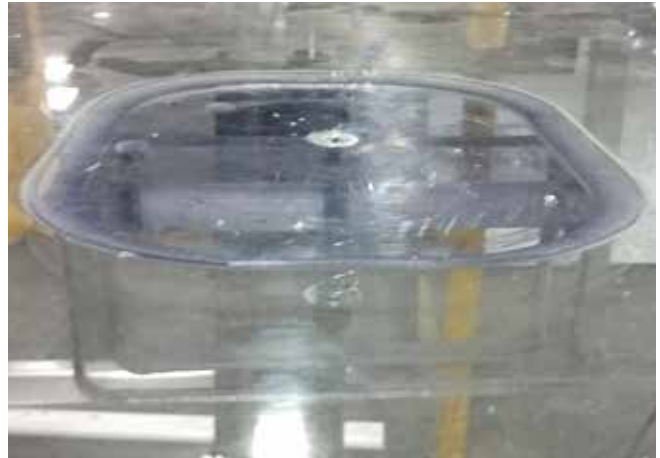


If the cover does not sit flush, adjust the roundover bit down in small increments and re-route the hole until the camera hole cover lays flush with the ice side of the acrylic.



Step 7: De-burr acrylic

Once satisfied with the fit of the camera hole cover, remove the clamps and camera hole template. De-burr the ice side edge of the acrylic with a deburring tool and clean acrylic as required.



Step 8: Attach safety cable

Insert camera hole cover and lock into place. Attach safety cable block to the dasher board using double-sided tape. This is to prevent the camera hole cover inadvertently being dropped on the ice. Ensure there is enough slack in the cable to remove the camera hole cover.

Your camera hole cover is now complete.



Operation

To remove the camera hole cover, turn the handle until the pin on the handle locks into the hole at a 45 degree angle to vertical. Push the camera hole cover into the playing surface, rotate so that the handle faces up and the small narrow end of the cover faces the hole in the acrylic. Pull the camera hole cover through the hole and let hang from the safety cable.





554 Parkside Drive, Waterloo, Ontario, Canada N2L 5Z4 TEL 519-747-1856
720 Innovation Drive, Shakopee, Minnesota, USA 55379 TEL 763-249-7465

athletica.com



BORDER PATROL



GAMEPLEX

INFINITY Series™



PRO Series™